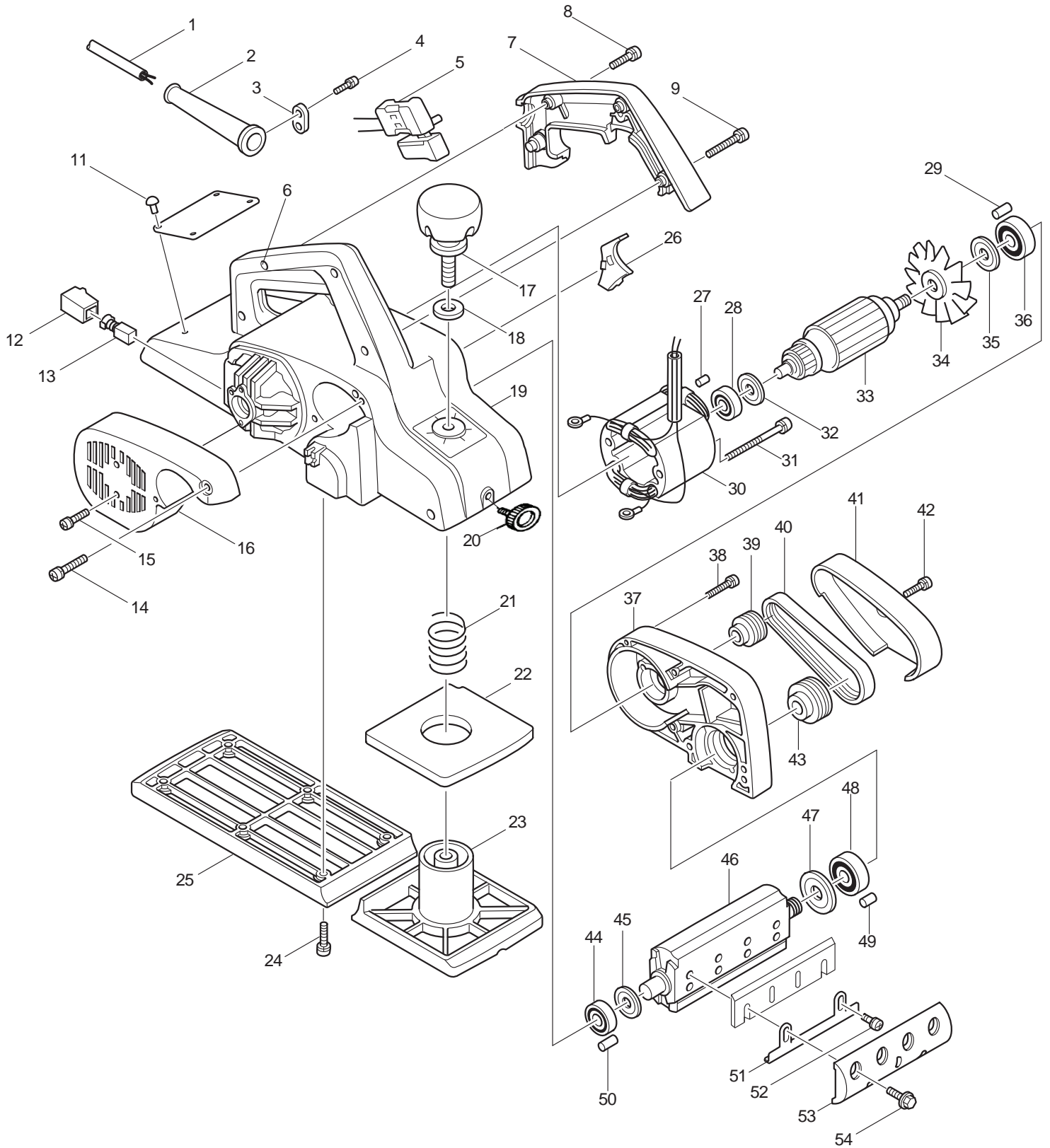




04 - 2010  
1911B  
4-3/8" PLANER



Item No	Type	Ref	Part No	Description	Qty	Unit
1			660023-6	CORD W/PLUG 2P-18-5.0M, SJ (OLD#664013-1)	1	PC.
2			682502-4	CORD GUARD 8-85	1	PC.
3			687063-9	* CORD CLAMP	1	PC.
4			911133-5	PAN HEAD SCREW M4X18	2	PC.
5			651225-5	* SWITCH (TRIGGER) W/ LOCK-ON BUTTON	1	PC.
6			931102-0	HEX NUT M4	4	PC.
7			414538-3	* HANDLE COVER W/HOLE	1	PC.
8			911153-9	PAN HEAD SCREW M4X28	3	PC.
9			911168-6	PAN HEAD SCREW M4X40	1	PC.
11			953106-2	* RIVET 0-5 (Old)	4	PC.
12			643601-7	BRUSH HOLDER 6-10	2	PC.
13	1		181437-1	CARBON BRUSH CB-107 2PC/SET (W/O ORIGIN)	1	SET
	2		194977-0	CARBON BRUSH CB-107 2PC/SET (W/ ORIGIN)	1	SET
	Opt.1		191904-8	A.C CARBON BRUSH CB113 2PC/SET (W/O ORIGIN)	1	SET
	Opt.2		194978-8	A.C. CARBON BRUSH CB113 2PC/SET (W/ ORIGIN)	1	SET
14			911168-6	PAN HEAD SCREW M4X40	1	PC.
15			911123-8	PAN HEAD SCREW M4X14	2	PC.
16			410438-5	* REAR COVER	1	PC.
17			271226-3	KNOB 50	1	PC.
18			941251-5	FLAT WASHER 10	1	PC.
19			159689-2	* MAIN FRAME	1	PC.
20			251812-6	SCREW M5X10 (Old)	1	PC.
21			231004-3	COMPRESSION SPRING 18	1	PC.
22			421147-1	RUBBER PACKING	1	PC.
23			312951-8	FRONT BASE	1	PC.
24			911226-8	PAN HEAD SCREW M5X18 (OLD#911231-5)	6	PC.
25			312952-6	REAR BASE	1	PC.
26			411428-1	BAFFLE PLATE	1	PC.
27			263014-2	* RUBBER PIN 4 (Old)	1	PC.
28			211031-6	BALL BEARING 608LLB	1	PC.
29			263002-9	RUBBER PIN 4	1	PC.
30			594486-3	* FIELD ASS'Y 115V (OLD# 522416-4 - N/L/A)	1	PC.
	1	INC.	654038-3	INSULATED TERMINAL FK1.25-M4 (TYPE1)	2	PC.
	2	INC.	654037-5	INSULATED EYE TERMINAL FT1.25-M3 (TYPE 2)	2	PC.
31	1		911290-9	* PAN HEAD SCREW M5X65	2	PC.
	2		911295-9	* PAN HEAD SCREW M5X70	2	PC.
32			681613-2	INSULATION WASHER (OLD# 681603-5 - N/L/A)	1	PC.
33			516081-9	ARMATURE ASS'Y 115V	1	PC.
		INC.		Item No. 28,32,34,35,36		
34	1		241044-3	FAN	1	PC.
	2		241519-2	FAN 68	1	PC.
35			213051-6	DUST SEAL 10	1	PC.
36			211066-7	BALL BEARING 6200LLB	1	PC.
37			152362-3	* BRACKET	1	PC.
		INC.		Item No. 29,49		
38			911158-9	PAN HEAD SCREW M4X30	6	PC.
39			222050-7	V-PULLEY 4-24L	1	PC.
40			225069-5	* POLY V-BELT 4-272	1	PC.
41			411426-5	BELT COVER	1	PC.
42			911123-8	PAN HEAD SCREW M4X14 (OLD# 911128-8)	1	PC.
43			222063-8	V-PULLEY 4-38	1	PC.
44			211062-5	BALL BEARING 6000ZZ	1	PC.
45			341389-0	WASHER 10	1	PC.

Item No	Type	Ref	Part No	Description	Qty	Unit
46			161119-1	* DRUM	1	PC.
47			341377-7	WASHER 12	1	PC.
48			211107-9	BALL BEARING 6201ZZ	1	PC.
49			263005-3	RUBBER PIN 6	1	PC.
50			263002-9	* RUBBER PIN 4 (Old)	1	PC.
51	1		345157-3	* BLADE HOLDER	2	PC.
	2		341601-8	* ADJUSTING PLATE	2	PC.
52	1		911106-8	* PAN HEAD SCREW M4X8	4	PC.
	2		251246-3	* + PAN HEAD SCREW M4X5	4	PC.
53	1		345156-5	* DRUM PLATE (2PCS/SET)	1	SET
	2		344442-1	* DRUM PLATE (2PCS/SET)	1	SET
54			251609-3	HEX. FLANGE HEAD BOLT M6X17	8	PC.
55			232065-6	* LEAF SPRING (Old)	2	PC.
56			321346-4	* PIN (Old)	2	PC.
57			961017-7	* STOP RING E-3 (Old)	1	PC.
58			321347-2	* STOPPER PIN (Old)	1	PC.
59			231303-3	* COMPRESSION SPRING 5 (Old)	1	PC.
60			256714-1	* PIN 2 (Old)	1	PC.
61			252415-9	* NUT N4-12 (Old)	1	PC.
66			267012-8	* FLAT WASHER 5 (Add)	2	PC.
100			819063-3	MAKITA LABEL	1	PC.
200			652257-5	CLAMP WASHER TYPE 1 (F/SWITCH)	4	PC.
201			652008-6	P.H. SCREW M3.5 X 7 (F/SWITCH)	4	PC.

#### **ACCESSORIES**

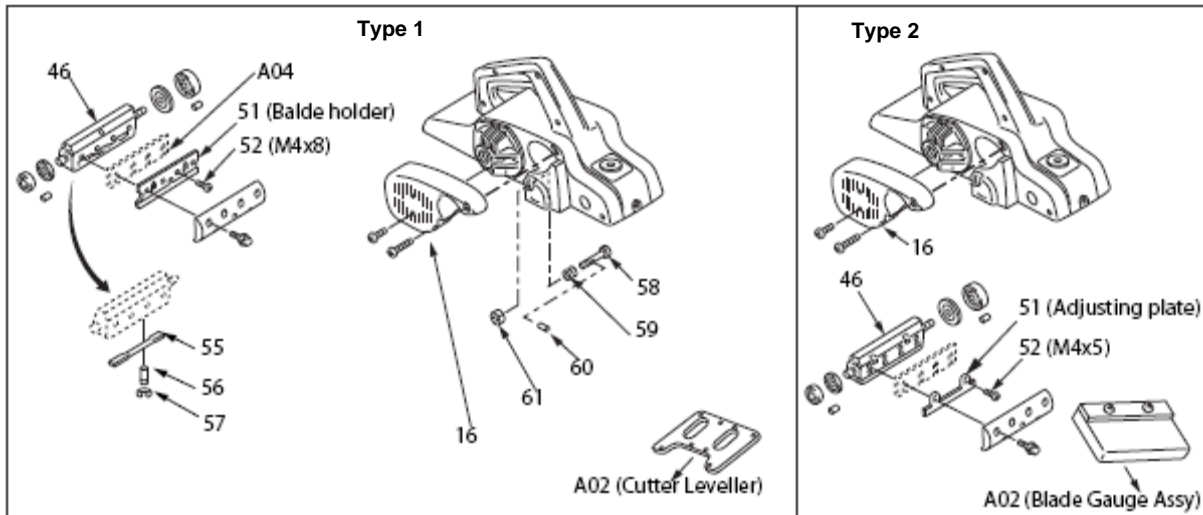
A01			123055-9	SHARPENING HOLDER ASS'Y	1	PC.
		INC.	934301-3	WING NUT M6	2	PC.
		INC.	251920-3	CAP SQUARE NECK BOLT M6X30	2	PC.
		INC.	341390-5	PRESSURE PLATE (N/A as individually)	1	PC.
A02	3		123010-1	* BLADE GAUGE ASS'Y (PACKAGED)	1	PC.
		INC.	411086-3	* GAUGE PLATE	1	PC.
		INC.	911228-4	* PAN HEAD SCREW M5X18	2	PC.
A03			794061-7	DRSSNG STONE 150-1200, 7 LANG.	1	PC.
A04			793008-8	PLANER BLADE 110	1	SET
A05			782209-3	SOCKET WRENCH 9	1	PC.
A06			191455-1	GUIDE RULE SET	1	SET
		INC.	164371-0	GUIDE RULE (N/L/A as individual part)	1	PC.
		INC.	251812-6	SCREW M5X10	1	PC.
A07			122402-1	DUST BAG ASSEMBLY	1	PC.

## SERVICE CHANGES

### 1. Changes on Rear Cover, Drum etc.

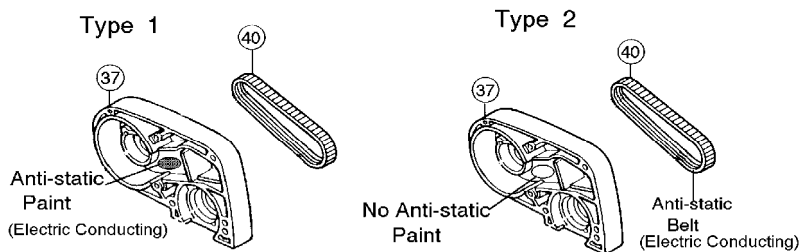
Item No.	Description	Type 1	Type 2
16	Rear Cover	150049-1 (N/L/A)	410438-5
46	Drum	161078-9	161119-1
51	Blade Holder/ Adjusting Plate	345157-3 (Blade Holder)	341601-8 (Adjusting Plate)
52	P.H.Screw	911106-8 (M4X8)	251246-3 (+P.H Screw M4X5)
55	Leaf Spring	232065-6	-----
56	Pin	321346-4	-----
57	Stop Ring E-3	961017-7	-----
58	Stopper Pin	321347-2	-----
59	Compression Spring 5	231303-3	-----
60	Pin 2	256714-1	-----
61	Nut M4-12	252415-9	-----
A02	Cutter Leveller/ Blade Gauge Assy	155270-7 (Cutter Leveller)	123010-1 (or 123062-2) (Blade Gauge Assy)
	Serial No.	~ 162999	163000 ~

Above parts are completely interchangeable as a set.



### 2. Changes on Bracket and Poly V-Belt

Item No.	Description	Type 1	Type 2
37	Bracket Com.	152197-2 (N/L/A)	152362-3
40	Ploy V-Belt	225037-8 (N/L/A)	225069-5

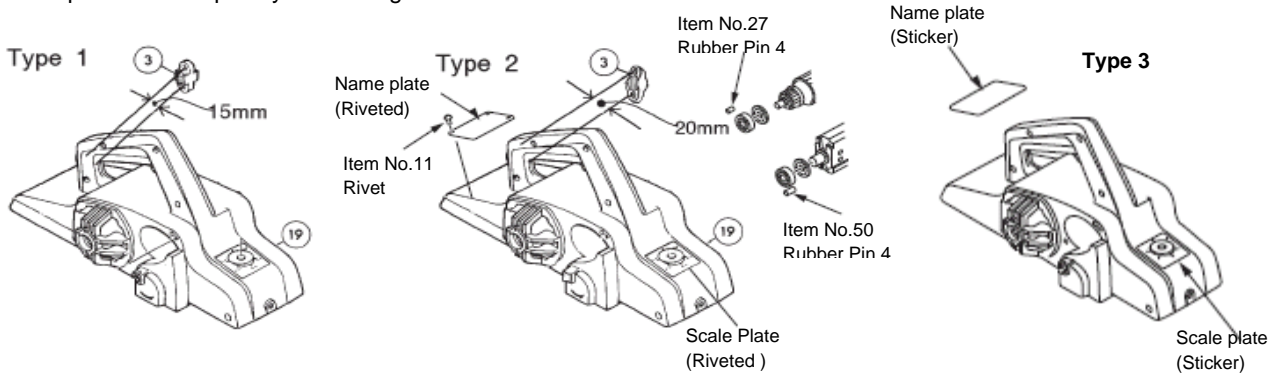


**SERVICE CHANGES**

**3. Changes on Strain Relief and Main Frame**

Item No.	Description	Type 1	Type 2	Type 3
3	Strain Relief	687002-9		687063-9
19	Main Frame Com.	157934-9 (N/L/A)	159689-2	159689-2 (Part No. remains the same)
27	Rubber Pin 4	263014-2 (or 263013-4)		-----
50	Rubber Pin 4	263002-9		-----
11	Rivet 0-5	953106-2		-----

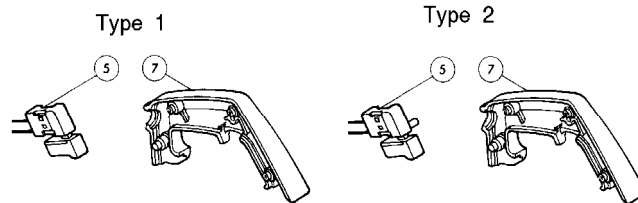
Above parts are completely interchangeable as a set.



**4. Changes on Switch and Handle Cover**

Item No.	Description	Type 1	Type 2
5	Switch	651229-7 (W/O Lock-on Button)	651225-5 (W/ Lock-on Button)
7	Handle Cover	414273-3 (No Hole) - N/L/A	414538-3 (W/ Hole)

Above parts are completely interchangeable as a set.

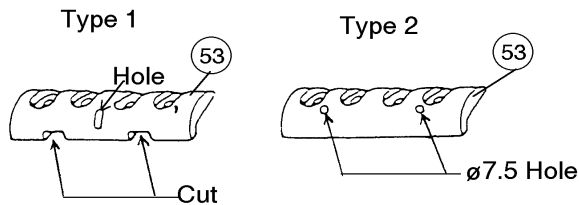


**5. Changes on Switch and Handle Cover**

Item No.	Description	Type 1	Type 2
53	Drum Plate	345156-5	344442-1
	Serial No.	~ 201072E	201073E ~

Above parts are completely interchangeable as a set.

Models before Serial No. 162999E - use Type 1 Drum Plate.



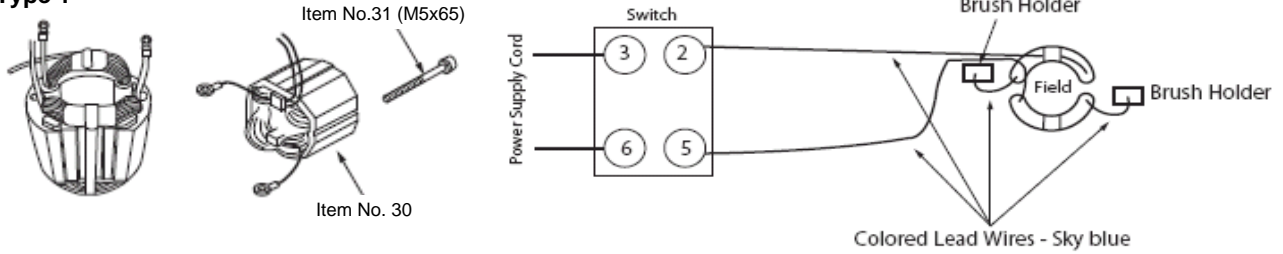
**SERVICE CHANGES**

**6. Changes on Field Assy, P.H. Screw and Addition of Washer**

Item No.	Description	Type 1	Type 2
30	Field Assy	522416-4	594486-3
31	P.H.Screw	911290-9 (M5X65)	911295-9 (M5X70)
66	Flat Washer 5	-----	267012-8

Above parts are completely interchangeable as a set.

**Type 1**



**Type 2**

